



**India Meteorological Department
(Ministry of Earth Sciences)**

BULLETIN NO. 13 (BOB/06/2022)

TIME OF ISSUE: 2000 HOURS IST **DATED: 16.08.2022**
FROM: INDIA METEOROLOGICAL DEPARTMENT (FAX NO. 24643965/24699216/24623220)
TO: CONTROL ROOM, NDM, MINISTRY OF HOME AFFAIRS (FAX.NO. 23093750)
CONTROL ROOM NDMA (FAX.NO. 26701729)
CABINET SECRETARIAT (FAX.NO.23012284, 23018638)
PS TO HON'BLE MINISTER FOR S & T AND EARTH SCIENCES (FAX NO.23316745)
SECRETARY, MOES (FAX NO. 24629777)
H.Q. (INTEGRATED DEFENCE STAFF AND CDS) (FAX NO. 23005137/23005147)
DIRECTOR GENERAL, DOORDARSHAN (23385843)
DIRECTOR GENERAL, AIR (23421105, 23421219)
PIB MOES (FAX NO. 23389042)
UNI (FAX NO. 23355841)
D.G. NATIONAL DISASTER RESPONSE FORCE (NDRF) (FAX NO. 26105912, 2436 3260)
DIRECTOR, PUNCTUALITY, INDIAN RAILWAYS (FAX NO. 23388503)
CHIEF SECRETARY, GOVT. OF MADHYA PRADESH (FAX NO. 755-2441076)
CHIEF SECRETARY, GUJARAT (FAX NO. 079-23250305)
CHIEF SECRETARY, DAMAN & DIU (FAX NO. 0260-2230775)
CHIEF SECRETARY, DADRA & NAGAR HAVELI (FAX NO. 0260-2645466)
CHIEF SECRETARY, RAJASTHAN (FAX NO. 141-2227114)
CHIEF SECRETARY, UTTAR PRADESH (FAX NO.0522-2239283)
CHIEF SECRETARY, HARYANA (FAX NO. NA)
CHIEF SECRETARY, DELHI (FAX NO. 011-23392102)

Sub: Well-Marked Low Pressure Area over Central parts of Rajasthan

The Depression over East Rajasthan moved west-northwestwards during past 06 hours and weakened into a well-marked low pressure area over central parts of Rajasthan at 1730 hours IST of today, the 16th August. It is very likely to continue to move west-northwestwards and weaken gradually into a low pressure area during next 12 hours.

Warnings:

Rainfall:

- Rainfall at most places with heavy to very heavy rainfall at isolated places is very likely over East & West Rajasthan on 16th August and isolated heavy rainfall is likely over same region on 17th August. Extremely heavy Rainfall at isolated places is likely over south Rajasthan on 16th August.
- Rainfall at most places with heavy to very heavy rainfall at isolated places is likely over Gujarat region and Saurashtra & Kutch on 16th & 17th August and extremely heavy rainfall at isolated places is likely over Gujarat state on 16th August.

This is the last bulletin in association with the system. However regular weather bulletins shall continue from the respective Meteorological Centres and National Weather Forecasting Centre (NWFC), New Delhi in association with the remnant low pressure system.

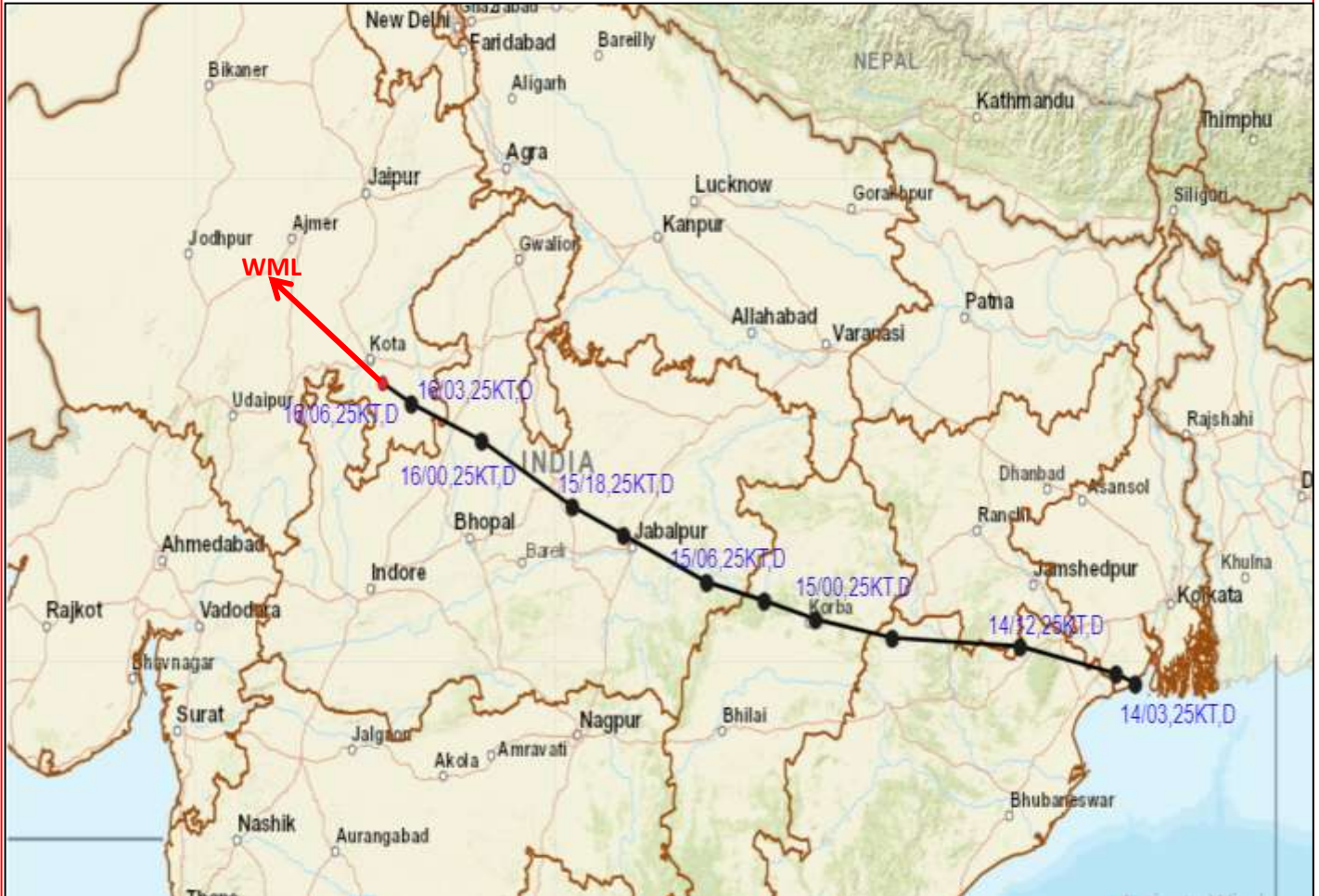
(Dr. AK DAS)
Scientist E, Cyclone Warning Division, New Delhi

Copy to: ACWC Mumbai/ ACWC Kolkata/ ACWC Chennai/ CWC Bhubaneswar/CWCVisakhapatnam/CWC Ahmedabad/ MO Port Blair/MC Raipur/MC Bhopal/MC Hyderabad/RMC Nagpur/MC Goa/MC Bengaluru/CWC Thiruvananthapuram







LEGEND: Heavy Rainfall: 64.5 to 115.5mm, **Very Heavy Rainfall:** 115.6 to 204.4mm **Most Places:** more than 76% of total stations, **Isolated Places:** Less than 25% of total



OBSERVED AND FORECAST TRACK OF DEPRESSION LAY AS A WELL MARKED LOW OVER CENTRAL PARTS OF RAJASTHAN BASED ON 1200 UTC OF 16th AUGUST, 2022

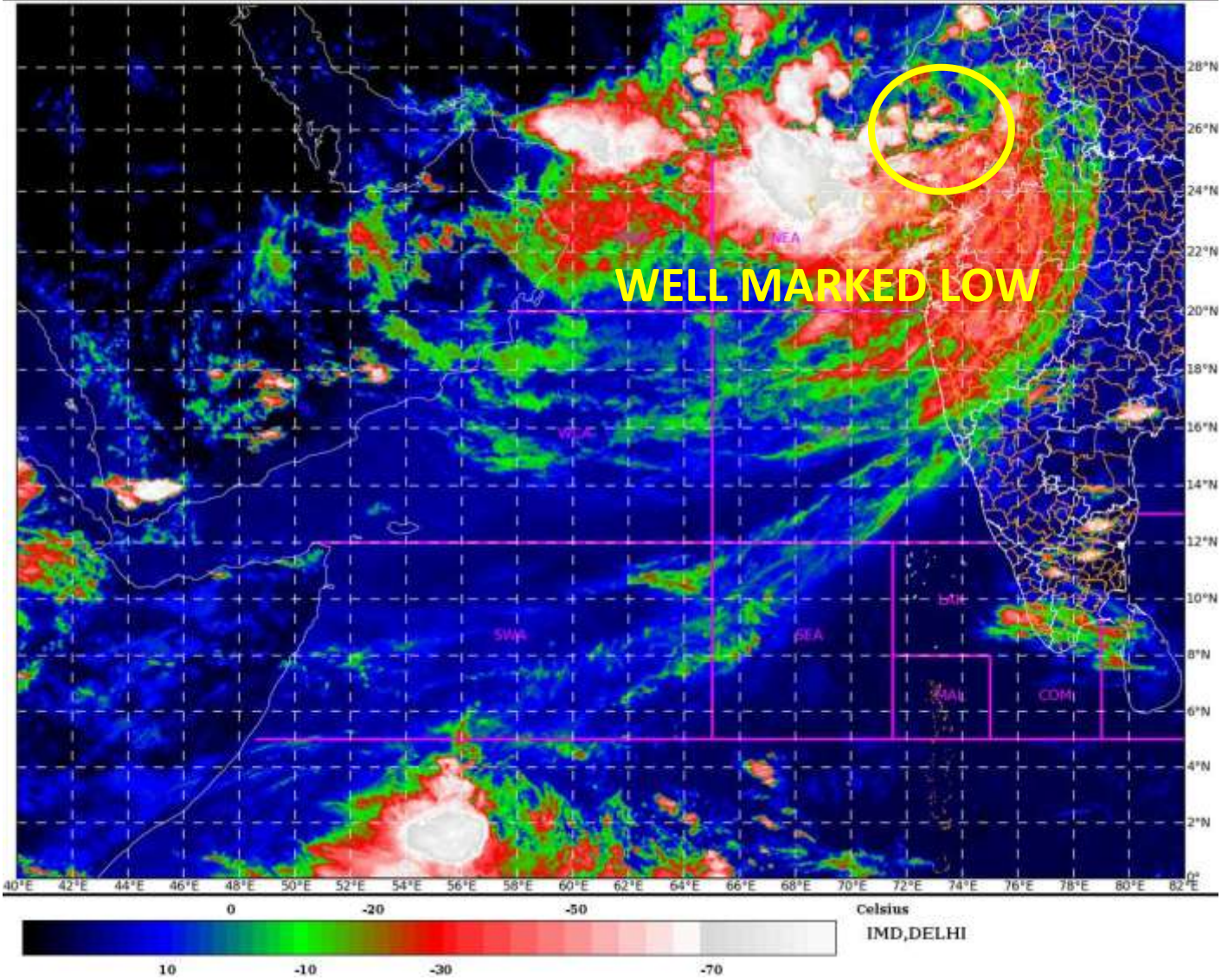


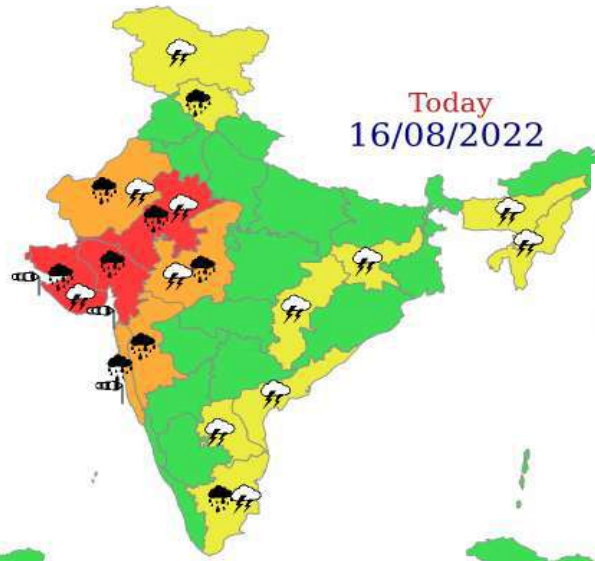
DATE/TIME IN UTC
 IST=UTC + 0530
 L: LOW PRESSURE AREA
 WML: WELL MARKED LOW PRESSURE AREA
 D: DEPRESSION (17-27 KT)
 DD: DEEP DEPRESSION (28-33 KT)
 CS: CYCLONIC STORM (34-47 KT)
 SCS: SEVERE CYCLONIC STORM (48-63KT)
 VSCS: VERY SEVERE CYCLONIC STORM (64-89 KT)
 ESCS: EXTREMELY SEVERE CYCLONIC STORM (90-119 KT)
 SuCS: SUPER CYCLONIC STORM (\geq 120 KT)

-  LESS THAN 34 KT
-  34-47 KT
-  \geq 48 KT
-  OBSERVED TRACK
-  FORECAST TRACK
-  CONE OF UNCERTAINTY

SAT : INSAT-3D IMG
IMG_TIR1_TEMP 10.8 um
ARABIAN SEA

16-08-2022/(1330 to 1356) GMT
16-08-2022/(1900 to 1926) IST





- | | | | |
|--------------|------------|--------------|--------------|
| Heavy Rain | Heavy Snow | Thunderstorm | Dust Storm |
| Strong Winds | Visibility | Cyclone | Squall/ Hail |
| Frost | Cold Wave | Heat Wave | Sea State |